



TPI Corporation

America's Comfort Conditioning Company

Manufacturing Updates

TPI Corporation

for

Distributing Partners



Manufacture Overview

**Company HQ's
Johnson City, TN**





Manufacture Overview

Brand Names & Product Types



Customer connection



- Electrical Heating Products



- Electrical Heating Products



- Infrared Heating & Task Lighting Products



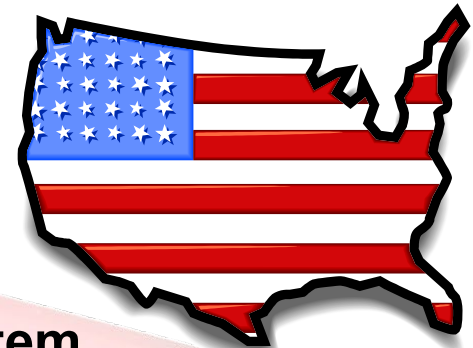
- Ventilation Products



- Thermostats



- In-Line Duct Heating / Cooling System



America's

Comfort Conditioning Company



Manufacture Overview



- 625,000 sq.ft of manufacturing space
- 400+ Salary & Hourly Employees
- Two-Operating Shifts
- Sheet Metal Worker's Labor Union





Manufacture Overview

Sheet Metal Fabrication Facility

Capital Investments to improve efficiency standards, quality, & reduce scrap



Turret Punch Press Machines



REINVESTMENT

- *New Amada Punch Press – Non-Operator Feed*
- *High Speed Electro-Servo Turret Press, w/Conveyor*
- *Lights-Out Set-up; two full-shifts, w/self-feeding system*
- *PC Based & Network Controlled*
- *Increased efficiency and reduced scrap*

- *Amada Punch Press – Operator Feed*
- *High Speed Electro-Servo Turret Press*
- *PC Based & Network Controlled*
- *Increased efficiency and reduced scrap*



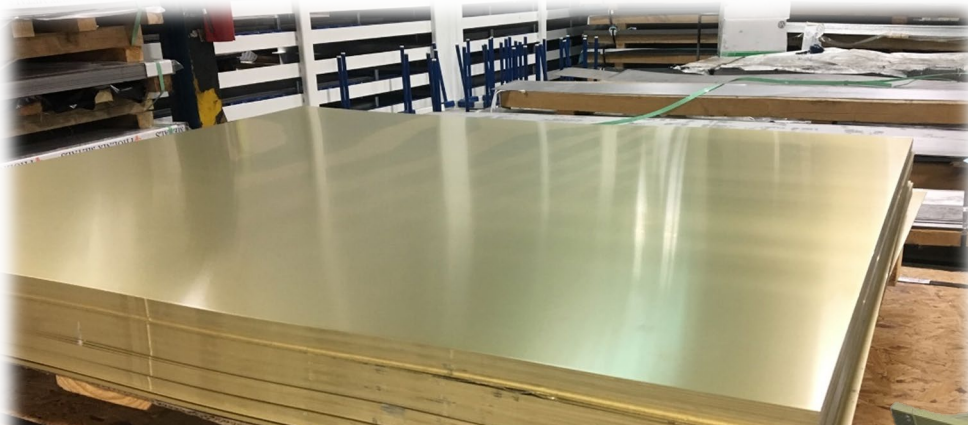
Manufacture Overview

Sheet Metal Fabrication Facility

Capital Investments to improve efficiency standards, quality, & reduce scrap

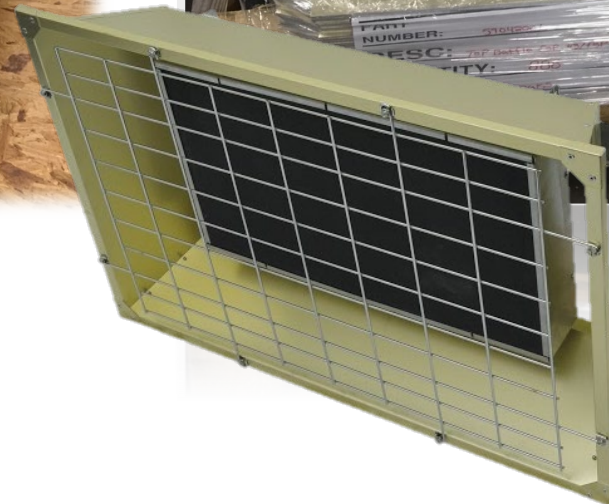


Turret Punch Press Process



REINVESTMENT

- **Gold-Anodized Sheet Metal**
- **Used on all FSS & FSP housing assemblies**
- **New equipment allowing production to reduce scrap & improve quality**





Manufacture Overview

New Sheet Metal Equipment



Capital Investments to improve efficiency standards, quality, & reduce scrap

Form Bending Machines



- Multi-Break (Operator-Feed) High-Speed Press Brake
- PC Programmed – Forms to complete finish product
- Used on several item; Infrared Heaters (MTM-Series)
- Increased production efficiency
- Higher precision – less scrap



Manufacture Overview

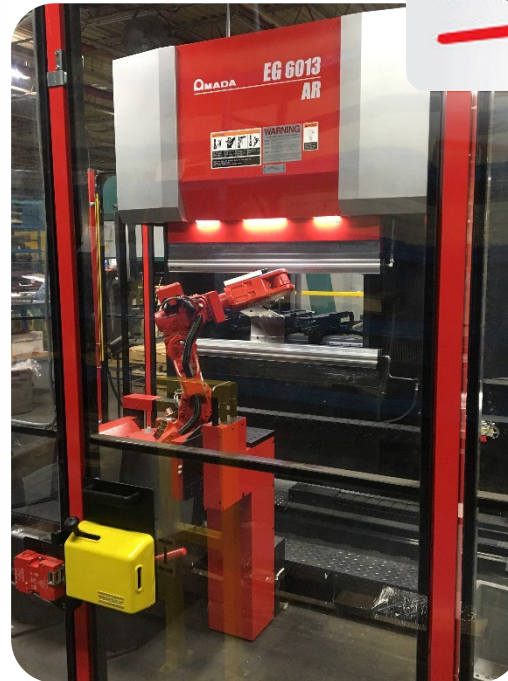
New Sheet Metal Equipment



Capital Investments to improve efficiency standards, quality, & reduce scrap



Form Bending
Machine



REINVESTMENT



- High speed press brake – Robotic Feed
- Ultra-high precision up to 12”
- Multi-load stations
- PC Programmed – with WiFi intel
- Non-operator – “lights-out” set-up
- Conveyor part returning system

- Used for small endcaps, mounting & supporting brackets
- Improve brake press shop efficiencies and scrap





Manufacture Overview

Sheet Metal Fabrication Facility

Capital Investments to improve efficiency standards, quality, & reduce scrap

Stamping Press Machines



KOMATSU



- New hard-tooling press machine
- PC based up to 100-job memories
- Used for stamping heavy metal parts from grills to brackets
- Increased operator efficiency & reduced scrap
- Reduces wear on hard tooling dies for better performance



REINVESTMENT





Manufacture Overview

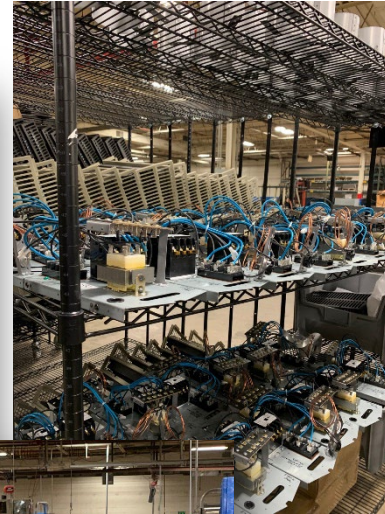
Production Assembly Changes



Improvements in assembly production areas using portable racking system



Portable Racking System



- New Process – allows for assembly bench area “kit buggy’s”
- Used on Fan-Forced Unit Heaters
- Increased assembly efficiency
- Helped reduce rising material costs
- More product series to follow
- Reduced lead-times

Lead-Times NOW 3 to 5 days!!

REINVESTMENT

**SPECIAL THANKS to *Distributing Partners* from
TPI Corporation for your time & support of our product lines!**



TPI Corporation is America's Comfort Conditioning Company...!